

Section # 11.1 Engine Dress

(Air Cleaner, Carburetor, Choke etc...)

Section Summary

Section	Description	Page
1	Air Cleaner	2
	Air Cleaner Base – Non Fresh Air Induction	3
	Air Cleaner Lid / Cover	9
	Air Cleaner Lid /Cover – Fresh air option	10
	Air Cleaner Elements	11
	After Market Filter Elements	12
	Air Cleaner Assembly Reference	13
	Engine Identification Pie Tins	15
	Air Cleaner Attachments and Decals	17
	Shaker Bubble Assembly	23
	Shaker Decal	25
	Shaker Bubble – Engine Call out	26
	Shaker Base and Adapter Ring (N96 option)	28
	Emission Control Valve	32
2	Carburetor Related	33
	Spacers	33
	Holly Carburetors	35
	Holly Carburetors Identification	35
	Six Pack Vacuum Hoses	38
	Six Pack Gasket	39
	Six Pack Throttle Rod Clips and Center Link Clip	39
	Carter Four Barrel Carburetors	41
	Carter Carburetors Tags	41
	Carter Carburetors Identification	41
	Carburetor Linkage Reference	43
	Carter Thermo Quad Carburetors	47
3	Carburetor Related Choke Assembly, Tags, Hoses and Clamps	49
4	EGR valve	53

1. Air Cleaner

Air Cleaner Base – Non Fresh Air Induction

1970

The base is painted black with wrinkle finish paint on the performance models in 1970 .

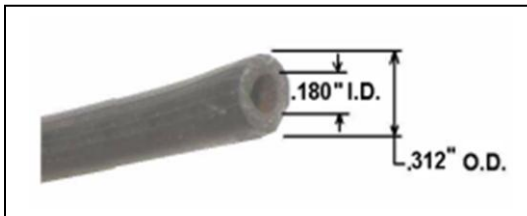


Note: Starting in 1970 an air cleaner temperature was added to single carburetor engine applications. The hoses that lead from the snorkel to the valve near the carburetor opening are .312” in diameter , black and ribbed. Inspect the seal between the top of the valve and the base. The two retainers on the bottom of the valve are phosphate plated.

We have found variations in the temperature valve in 1970 and 71. From 1972-76 the valve stayed consistent in its configuration.



1970 – 71 pre-fresh air heater valve sensor reference



1972-74 sensor reference



1970 reference of the vacuum diaphragm

Air Cleaner Bases Cont...

Carburetor Pre Heater

Starting in 1970 a carburetor pre heater was added to all non-fresh air induction air cleaners.

1970-72 - The tube is made out of paper with a black exterior and tan interior with a spine spring.

1973-74 – The tube is made out of aluminum that was natural in color with a spine spring.

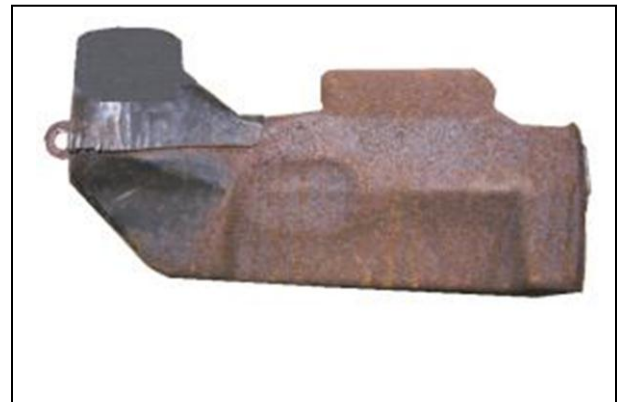


Reference 318 CID exhaust manifold with pre-air heater shield and tube.



Reference 383/440 CID exhaust manifold with pre-air heater shield and tube.

Note: The pre –air heater shield is covered in the under the previous Engine Dress Section of this manual.



Reference 1974 360 CID exhaust manifold with pre-air heater shield



Six cylinder engine reference pre-air heater shield

Air Cleaner Base Cont...

1972-73 Base 340 CID – “Trapped Door” Style

The base is painted orange. The hoses that lead from the snorkel to the valve near the carburetor opening are black and ribbed. Inspect the seal between the top of the valve and the base. The two retainers on the bottom of the valve are phosphate plated.



Air Cleaner Cont...

1974 Air Cleaner Base

Starting in 1974 the NOX valve was mounted to the side of the air cleaner base.



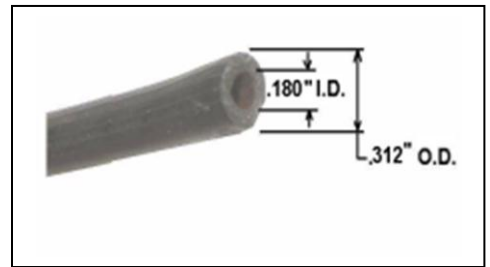
OSAC valve front side



Back side of OSAC valve



Black rubber seal between OSAC valve and air cleaner base



Note: The firewall mounted OSPC control unit (NOX sensor) is covered in the engine compartment section of this manual.



Air Cleaner Base Cont...

340 – 4 bbl (E55 code)

The base is stamped steel painted in a wrinkle finish semi-gloss black and is un-silenced. There is one (1) black ribbed rubber hose secured to a nipple at the right rear and that goes to the PVC breather. Both ends are secured with phosphate coated spring clamps.

383 – 4 bbl (E63 code) and 440 – 4 bbl (E86 code)

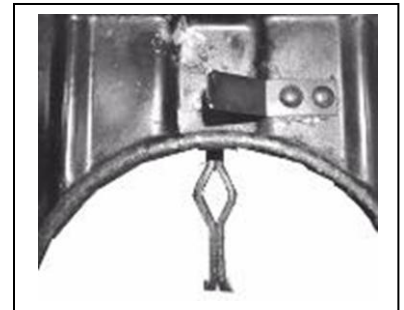
The base is stamped steel dual snorkel style for E63 and E86 codes were painted in a wrinkle finish semi-gloss black. Note: The bottom of the lid, inside the base and bottom inner area of base did not have a wrinkle finish. There is one (1) black ribbed rubber hoses secured to a nipple at the right rear that goes to the PVC breather. Both ends are secured with phosphate coated spring clamps. There are two (2) small blacked ribbed rubber hoses are each connected to the heat stove housings that are mounted to the top of each snorkel. Each hose is routed along the side of the base and underneath and terminated at the nipples of the heat sending valve.

440-6 bbl (E86 code)

The base is stamped steel and painted semi-gloss black. There is a grounding strap riveted near the center carburetor. This strap makes contact with the top of the center carburetor. There is a specific area around the clearance for the studs that has to be examined to identify an original base from a reproduction. The original base has a diamond shape hole that the stud would pass through the reproduction base has a round shaped hole. There is one (1) black ribbed rubber hoses secured to a nipple at the right rear and that goes to the PVC breather. Both ends are secured with phosphate coated spring clamps

440-6 bbl (E86 code)

The base is stamped steel and painted semi-gloss black. There is a grounding strap riveted near the center carburetor. This strap makes contact with the top of the center carburetor. There is a specific area around the clearance for the studs that has to be examined to identify an original base from a reproduction. The original bases have a diamond shape hole that the stud would pass through. The reproduction base has a round shaped hole. There is one (1) black ribbed rubber hoses secured to a nipple at the right rear and that goes to the PVC breather and both ends are secured with phosphate coated spring clamps.

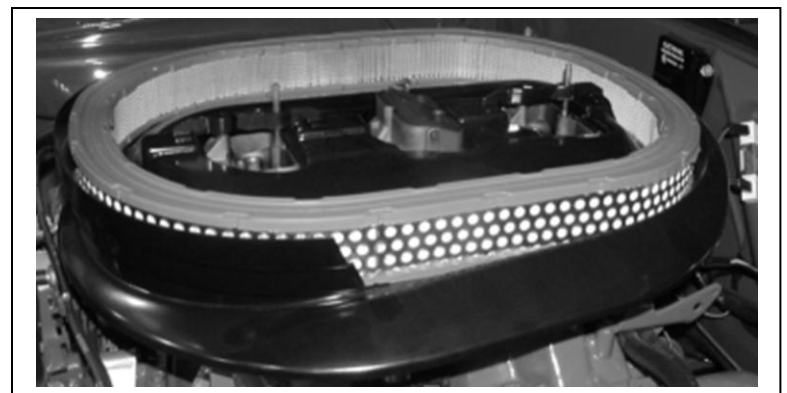


440-6 bbl (E86 code) and 426 Hemi (E74 code)

The base is stamped steel and painted semi-gloss black. There is one (1) black ribbed rubber hose secured to a nipple at the right rear that goes to the PVC breather. Both ends are secured with phosphate coated spring clamps.



4 BBL carburetor spacer/gasket reference



440 – 6 bbl air cleaner base and filter “non-shaker”

Base Plates Cont...

Shaker Base (340- 4bbl, 383-4bbl, 440-4bbl, 440+ 6bbl and 426 Hemi)

The base is stamped steel and painted semi-gloss black. There is a 3/4 inch black foam seal on the top side of the front oval opening for the hot air door. Shaker bases can vary in depth when measuring from the bottom of the carburetor bracket down. Can they also be identified by the "feet" brackets.

☐ Note:

There are two (2) stamped steel shaker supports that are spot welded to the bottom of the base plate that help support the base plate on some models. These supports have two pieces on each side that are secured together with a Hex head SEMS phosphate coated bolt that is threaded into a nut welded to the upper portion of the adapter ring.

1970 and 71 340 shaker bases had feet supports on the front. 1970-71 383 bases used the center rod for support, some were not drilled for it. Some original paint 383 bases may show a faint sign of a green paint stripe on the side for identification, original paint super rare 440-4v base may have a faint orange stripe of paint. The 440-4bbl bases were same as the 1971 340 base but had no feet brackets and used no feet.

☐ Reference heights for a 340, 383, and 440 4-bbl shaker base plates

A= Measured from bottom the carburetor stud bridge to the bottom of throat base.

Part No	Year	Engine	A	Comments
3512856	1970	340	1 3/4" deep	Feet brackets on front
3512764	1971	340	1 1/2" deep	Feet brackets on front
3462484	1970	440 4 V	1 1/2" deep	Same base as 70 340 but no feet brackets used. Has a Hemi Orange stripe on one edge to distinguish it from the 440-4V base
3462485	1970-71	383	2 1/2" deep	No spot welded bracket but center support used for a period of time. Has a Lime Green stripe on one edge to distinguish it from the 440-4V base
	1970-71	440-6 and Hemi		Used same style bracket spot welded on side but different than the 340 bracket, also the two used different length feet.

Note: All 340 brackets used the same spacing and are supposed to be spot welded in place. However, there are plenty out there with factory errors pertaining to the direction they were spot welded in place.



Six Cylinder Air Cleaners



This was used on some but not all passenger car slant six applications from 1961 to 1969. The 1961-'63 covers have no crankcase breather nipple. The crankcase breather nipple first appeared in 1964 on the California cars, then in 1968 in the other 49 states and Canada. The 1969 baseplates have a small nipple for the throttle plate anti-ice air inlet.

The same cover was used on the unsilenced 2bbl air cleaner on '65-'66 Barracudas, and (with chrome plating) on the 4 barrel setup as well.



1970-71 Reference



1974 Reference



Air Cleaner Attachments and Decals Cont...

Decals

340-4, 383-4, 440 -4 engines all have an instruction decal that has a yellow back ground with red lettering. This is attached to the side of the base. The decal indicates the air cleaner maintenance.

440 + 6 and 426 Hemi have an instructional decal that has a yellow back ground with red lettering. This is attached to the center front or back of the air cleaner cover. The orientation of the decal should not be judged. This decal indicates the air cleaner maintenance.

Note: This decal is often found mounted to the inside of bottom of the shaker assembly bubble.

Hoses and Clamps

► **Judges Guidance:** See previous air cleaner base Section under specific engine for a description of hoses and clamps.



Original engine air cleaner decal - 1970 318 engine. Oct 1969 production car. Use filter part # 1739547



Original engine air cleaner decal - 1968 318 engine. June 1968 production car. Use filter part # 1739547
Note: the variation of Made In Canada at the bottom between this one and the one on the left.



Reproduction engine air cleaner decal - 1970 440 + 6 engine. Use filter part # 2946186



Reproduction engine are cleaner decal - 1970 340 – 4bbl engine. Use filter part # 2863349

Air Cleaner Attachments and Decals Cont...



Original engine air cleaner decal - 1970 440 engine. September 1969 production car. Use filter part # 2863349



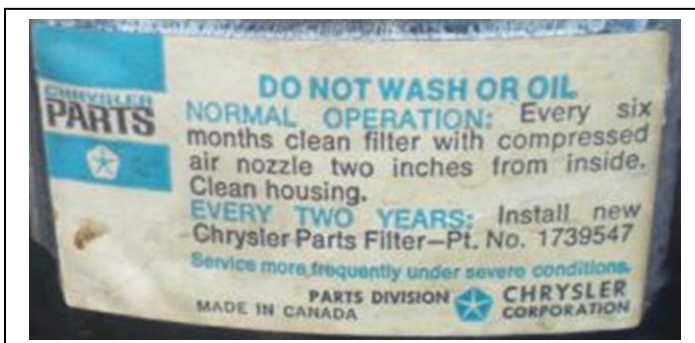
Original engine air cleaner decal - 1970 383 engine. August 1969 production car. Use filter part # 2863349. Note: The placement is on the front of the base and at an angle .



1972 -73 original air cleaner decal for a 4 bbl application



1972-73 reproduction air cleaner decal



1972 -73 original air cleaner decal for a 2 bbl application



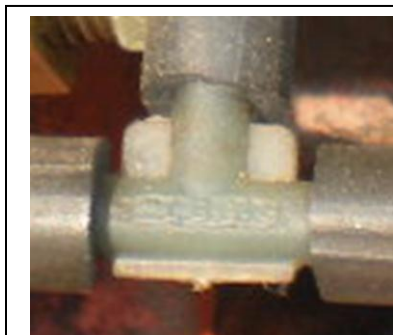
Six Pack Carburetor Vacuum Hoses

1969 1/2 – 71 Ribbed. The vacuum tee has been found in either clear (yellow hew) or black. We have not been able to determine any rational for the variations found.

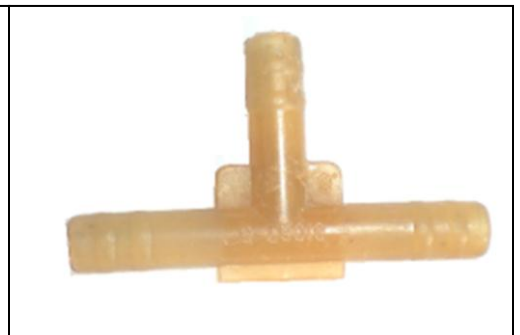
Note: Some 1969 1/2 cars we have found some with a white stripe running the length of the hose. We are still researching the use of the hose with the white stripe. The vacuum hose should be clipped to the fuel line with a Phosphate plated “S” clip.



Incorrect style tee



Correct style tee



Four Barrels Carburetor Identification:

The number would be found stamped into the passenger side front lower body of the carburetor, just in front of the mounting hole. The number would appear something like A1 4975S. A1 stands for January 1971 and the 4975S is the carburetor number. If there is a letter "A" after the letter "S" it designates a factory revision or that a change was made in design.

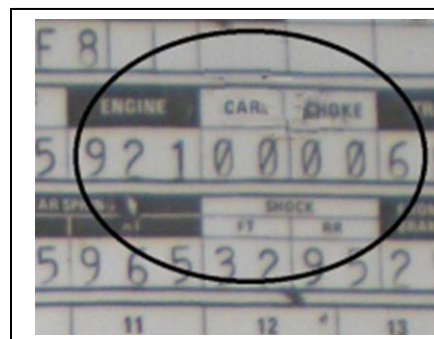
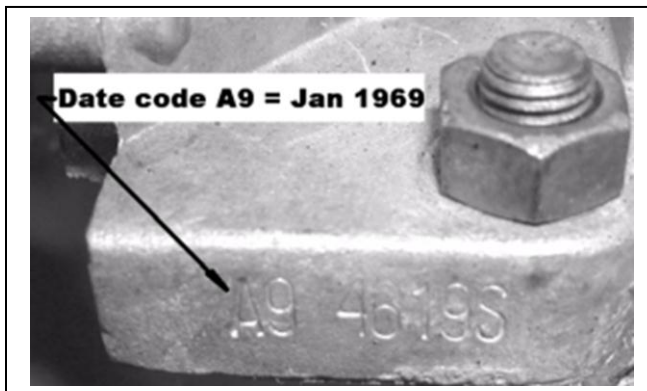
Note: Inspect the font style and size to ensure that it has not been re-stamped. During the 1960's and early 1970's there was only one style and size used.

Thermo-quad is dated on the rear of the carburetor without any tag.

Original factory stamp references



Re-stamp reference



Carter AFB 4619S for 426 Hemi. Date code A9 = January 1969. The code on the production build sheet is #00.

