

Air Cleaner Reference Cont...

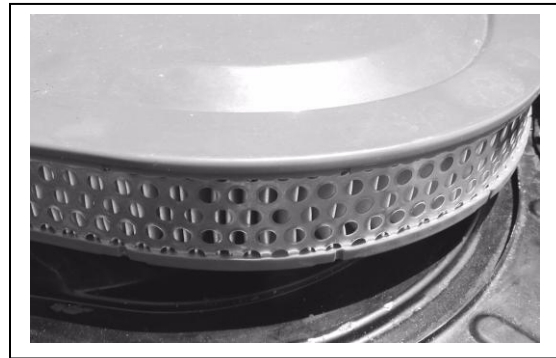
Filter Element

340-4, 383-4 and 440 -4 - The filter element was a white-to-yellowish corrugated paper with an expanded plated steel band sealed in molded orange rubber. The expanded metal had a series of round holes. The screen on the back side of the paper is a square mesh

440+6 and 426 Hemi - The filter element was a white-to-yellowish corrugated paper with an expanded plated steel band sealed in molded orange rubber. The expanded metal has a series of round holes. There was a series of "D" shaped holes on the original filters. The screen on the back side of the paper is a square mesh.



340 – 6 bbl engine ref.



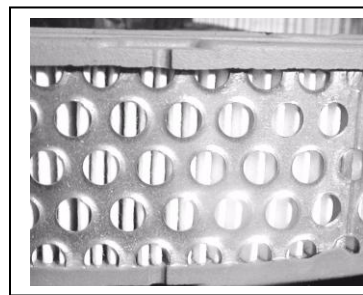
440 – 6 and 426 engine ref.



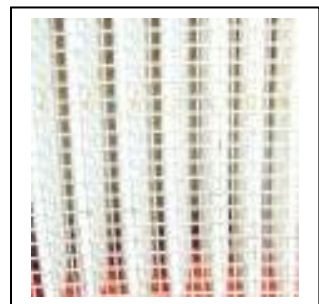
1972 – 74 340 – 4 bbl engine air cleaner



1970 – 71 340 – 4 bbl engine air cleaner



Original oval air filter with correct square pattern screen



11A -3-1 1971 383 – 4 bbl engine air cleaner



1970 383 and 440 – 4 bbl engine air cleaner



Original round air filter part # 2402677. There is 6 rows of holes and 2 rows of half circles.

Air Cleaner Reference Cont...



1970 383 and 440 – 4 bbl engine air cleaner early model with orange pie tin with engine call out.

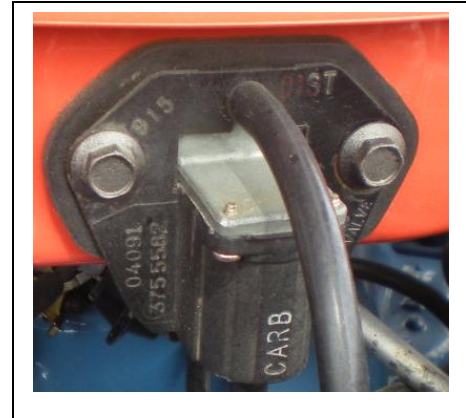


1970 383 and 440 – 4 bbl engine air cleaner late model (March 1970) with bump



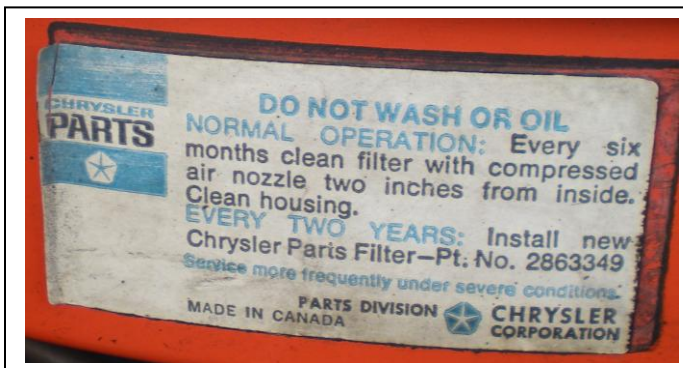
1970 383 and 440 – 4 bbl engine air cleaner early to mid model without bump

1974 Reference with Nox valve

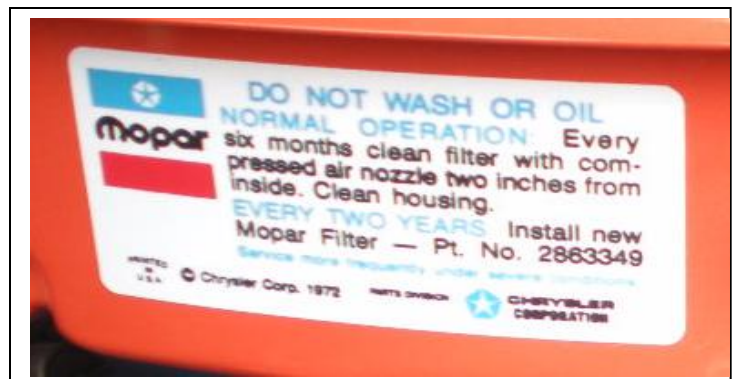


NOX Valve

✓ Note: The firewall mounted NOX sensor is covered in the engine compartment Section of this manual.



1972 -73 Original Air cleaner decal



1972-73 Reproduction Air cleaner decal

Engine Identification Pie Tins and Identification Decals

Most cars equipped with 340, 383 or 440 engines rolled out of the assembly plant with an engine ID plate on top of the air cleaner. The proper selection of engine ID plates are as follows:

1967-68 and some early 1969's - Red; 1969-71, Orange

340 - 4bbl (E55) air cleaner nameplate is a die-stamped aluminum with "340 Four Barrel" on it.

383 - 4bbl (E63) air cleaner nameplate is a die-stamped aluminum with "383 Super Commando" on it.

440 - 4 bbl (E86) air cleaner nameplate is a die-stamped aluminum with "440 Super Commando" on it.

440-6 bbl (E86) the air cleaner did not have a pie tin. The non-shaker (E bodies) vehicles have a 440 + six barrel decal applied to the lid.

426 Hemi (E74) the air cleaner did not have a pie tin.

► Note: The non-shaker (E bodies Challengers) / air grabber (B bodies) vehicles had a 426 Hemi decal applied to the lid.



Photo's reference
Dodge pie tins



Photo's reference
Plymouth pie tins

Engine Identification Decals

The following decals were applied to the top of the applicable air cleaner lid.

340-6 bbl the air cleaner did not have a pie tin. A 340 six pack six barrel decal applied to the lid.

440-6 bbl (E86) the air cleaner did not have a pie tin. The non-shaker (E bodies) vehicles have a 440 + six barrel decal applied to the lid.

426 Hemi (E74) the air cleaner did not have a pie tin.

► Note: The non-shaker (E bodies) / air grabber (B bodies) vehicles had a 426 Hemi decal applied to the lid.

Note: Shaker hood cars never had the air cleaner decal with the engine call out.

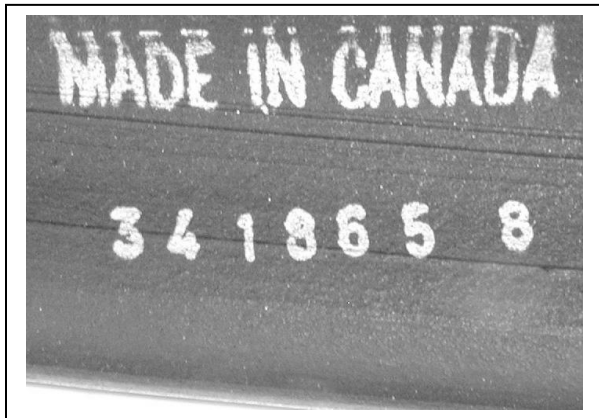


Mopar DO NOT WASH OR OIL decal found on December 19, 1969 built non – shaker car at Hamtramck Assembly plant 426 Hemi air cleaner lid. Use filter # 2946186.

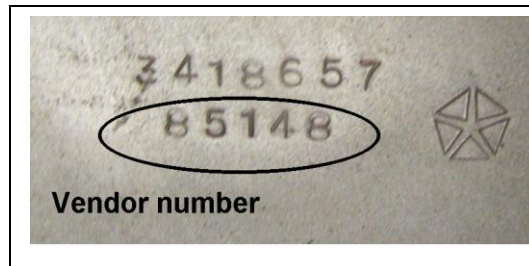


Non-shaker Challenger January 22, 1970 built at Hamtramck Assembly plant 426 Hemi air cleaner lid.

Shaker Bubble Assembly Cont...



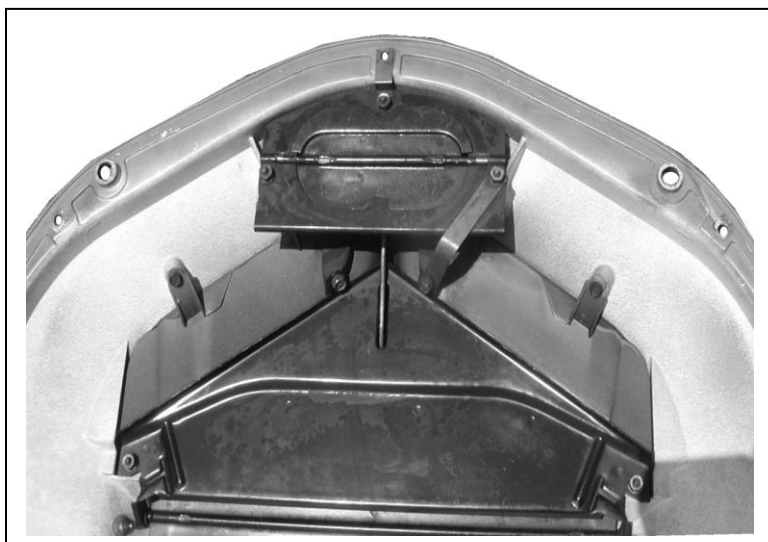
Black rubber outer seal part number



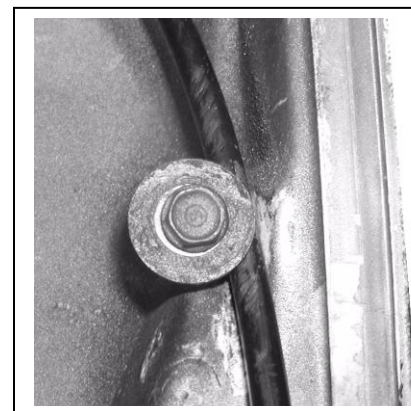
Shaker bubble part number



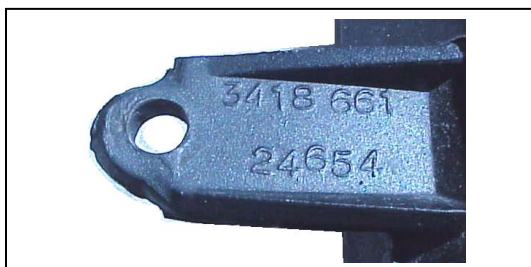
Black foam hot air door seal



Hot and cold air doors complete with grounding straps



Cable hold down fastener

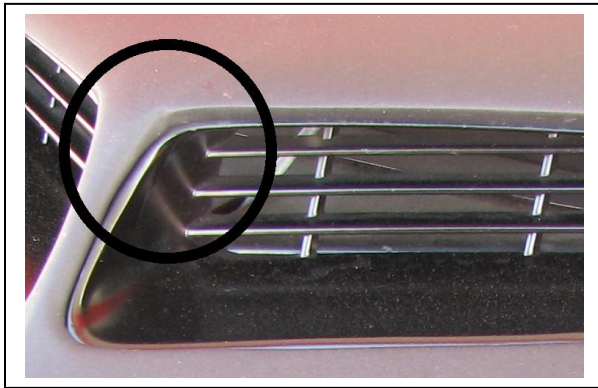


Vents have the part number and vendor code cast into them.



Original cables have been found with the air cleaner decal wrapped around it.

Shaker Bubble Assembly Cont...



Reproduction shaker bubble. The inner corner is square. The original bubble has a very distinct radius.



Engine emblem mounting nut reference.

Shaker base and adapter ring (N96 option)

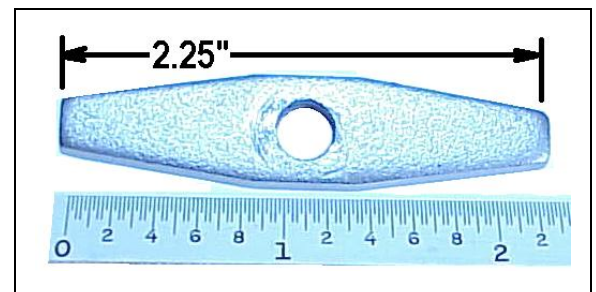
Shaker Base

340- 4bbl, 383-4bbl, 440-4bbl, 440+ 6bbl and 426 Hemi- The base is stamped steel and painted semi-gloss black. There is a 3/4 inch black foam seal on the top side of the front oval opening for the hot air door.

Shaker Adapter Ring

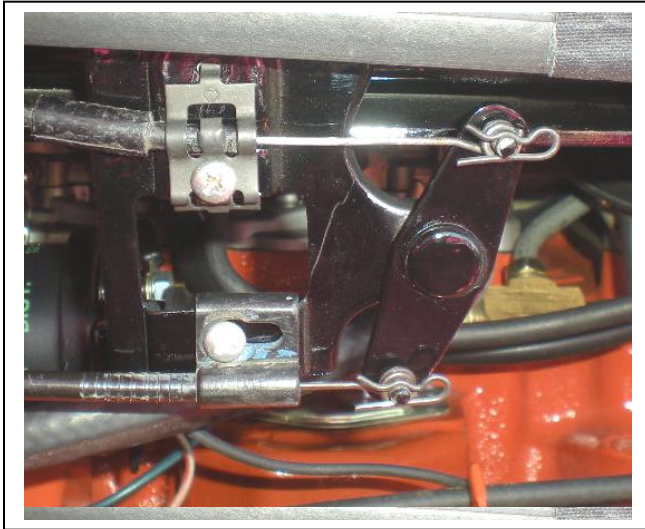
340- 4bbl, 383-4bbl, 440-4bbl, 440+ 6bbl and 426 Hemi- The base is stamped steel and painted semi-gloss black. The adapter ring is mounted to the base plate with seven (7) special diamond-shaped metal washers and hex nuts. There are two (2) 16 inch long black ribbed rubber hoses secured to the drain nipples with phosphate coated spring clamps.

There are two (2) stamped steel shaker supports that are spot welded to the bottom of the base plate that help support the base plate on some models. These supports have two pieces on each side that are secured together with a Hex head SEMS phosphate coated bolt that is threaded into a nut welded to the upper portion of the adapter ring.

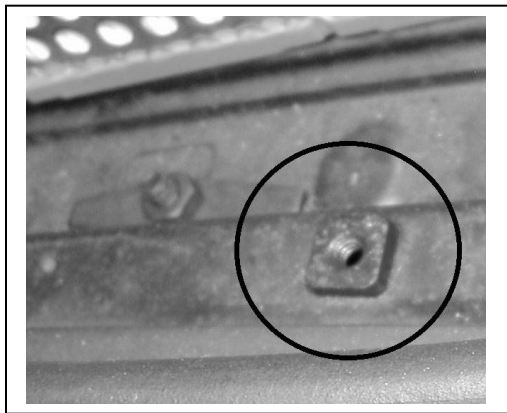


Base plate to adapter ring retainer reference

Shaker Reference Cont...



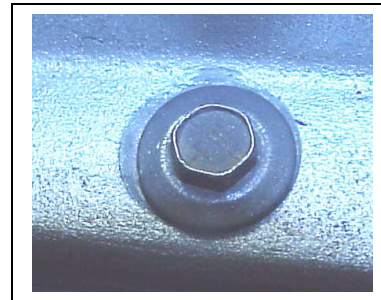
Cable retainer hair pin clip reference



Weld nuts have been found on either side of the plate. However the majority have been found on the bottom side of the plate.



1/4-20 hex head



#10-24 hex head bolt

Shaker bubble mounting bolts. We have found primarily #10-24 bolts . However, a few cars have been found with 1/4 -20 bolts.



1971 Original adapter ring weld stud reference. Head marking is **5**
S 8

